

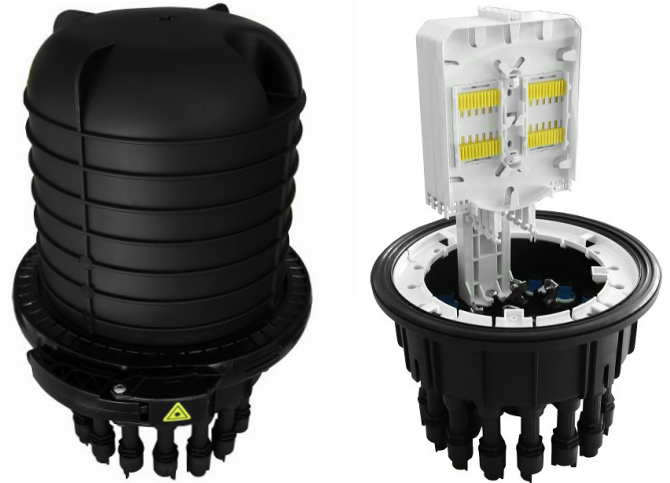


Applications:

- Fiber to the building (FTTB)
- Fiber to the home (FTTH)
- For use in outdoor application
- Wall mounted and pole installation
- Aerial, Direct Buried and Underground (shaft)
- Straight and Branch installations

Features:

- Dome type
- Protection Level: IP68
- Suitable for protecting fibre cable splices
- Slots for Mini type splitter body
- Resistance to vibration, UV and temperature fluctuation
- Sealing Structure Silicon Gum Material
- Easily re-enter without any tools, saves time and cost
- Rugged construction for long term reliability



Technical Information:

Height size	395mm
Width size	306mm
Base Type	Mechanical Sealing
Cable Entrance	1 oval + 2 round + 16 drop ports with integrated SC adapters
Cable diameter oval port	up to 2xØ10-21mm
Cable diameter round port	up to Ø4-12mm
Cable diameter drop port	up to 3mm
Max number of Splice Trays	4
Core capacity per splice tray	24
Core capacity per Closure	96
Dome & Base Material	PP (Polypropylene)



Accessories included in Package Content:

- Protection sleeves, Oval rubber sealing kit, Round rubber sealing kits, Spanner, Transport tubes
Wall mounted and Pole mounted brackets

